



MAVERICK

2022+ Ford Maverick 2WD/4WD/Hybrid front leveling kit installation guide

Professional installation is recommended

IMPORTANT!

Lifting and modifying the suspension on your vehicle may result in drive line vibrations, damaged bushings, erratic handling characteristics, and shortened suspension component life. HRG Off-road recommends the following:

- Checking and/or replacing worn drive axles with new parts, not remanufactured.
- Checking and/or replacing all worn factory rubber bushings with urethane bushings, such as Prothane.
- Checking and/or replacing worn shock absorbers and bump stops.
- Performing a 4 wheel alignment after working on suspension components.

Lift kits may not be legal for use on public highways in your area. Please check local laws before installing!!

WARNING!

Lifted vehicles are more prone to rolling over.

Some HRG Off-road products are designed to improve off-road capabilities. Modifying the suspension of your vehicle may result in handling characteristics that are different from a factory equipped vehicle. Extreme care must be used to prevent a rollover or loss of control. Always operate your modified vehicle at a reduced speed to ensure your ability to maintain control under all driving conditions. Driving your vehicle in an unsafe manner may result in serious injury or death. HRG Off-road lift kits are designed and tested to work together. HRG Off-road does not recommend combining this lift kit with any other type of suspension or body lift. Always wear your seat belt.

Recommended tire/wheel sizes:

245/60/18

245/65/17

245/70/16

Be sure to check fitment prior to installation! These sizes are only suggestions. HRG is not responsible for improperly fitted wheels/tires.

Included in the kit:

2 1.5" front lift spacers

- 6 M8x16 bolts (spacer mounting bolts)
- 2 0.75x0.5 M8 spacers (brake line spacers)
- 2 M6x25 bolts (brake line spacers)
- 2 M14 Front Camber adjustment bolts (optional)
- 2 replacement sway bar end links

Tools required:

Floor Jack or lift, lug wrench, 12mm, 13mm, 15mm, 18mm, 19mm, 21mm sockets and wrenches, T40 Torx bit, panel removal tool, bench grinder or flap wheel, torque wrench and heavy hammer.

Approximate installation time 2-3 hours

Front installation:

Step 1. Lift vehicle and support with jack stands.

Step 2. Remove wheels.

Step 3. Remove brake/ABS lines from driver side strut.

Step 4. Using 18mm wrench and Torx T40 bit, remove sway bar link.



Step 5. Remove nuts connecting strut to knuckle. Strike bolts carefully with hammer to slide bolts out. Do not use an impact to back bolts out of knuckle.

NOTE: Do not allow the hub to fall loose, as the axle may come out of the inner CV joint.

Step 6. Support knuckle with floor jack or screw jack.



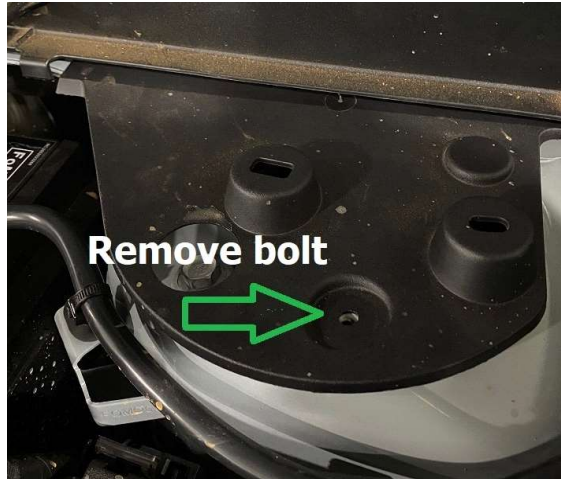
Step 7. Using a panel removal tool, pry up plastic cowl cover.



Step 7a (HYBRID MODELS ONLY) unclip wiring harness from cowl cover.



Step 8. Using a 10mm socket, remove plastic panel covering strut bolts.



Step 9. Using a 13mm socket, remove the bolts at the top of the strut connecting strut to strut tower.

Step 10. Remove strut. Save hardware for reinstallation.

Step 11. Remove ABS wiring from inner fender

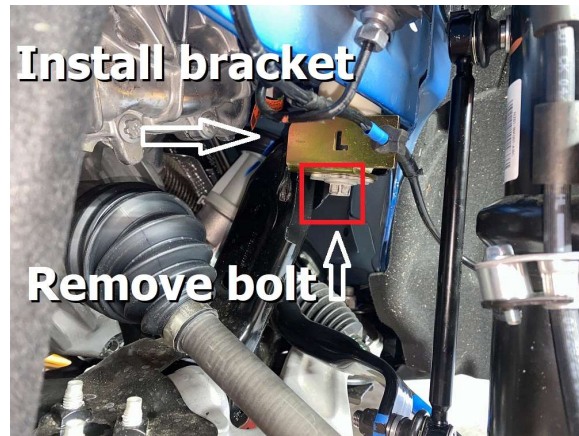
Step 12. Disconnect ABS wire from wheel sensor.

Step 13. Using a heavy hammer, create 1/16 inch of clearance where the wiring was located (this is for clearance for the thicker TTX sway bar links)



Step 14. Remove mounting bolt (see photo below)

Step 15. Install ABS wire relocation bracket as shown, reinstall mounting bolt.



Step 16. Reroute ABS wire as shown brake line bracket and plug back into wheel sensor. (see photo)

Step 17. Install lift spacers onto strut using supplied M8x16 bolts as shown.



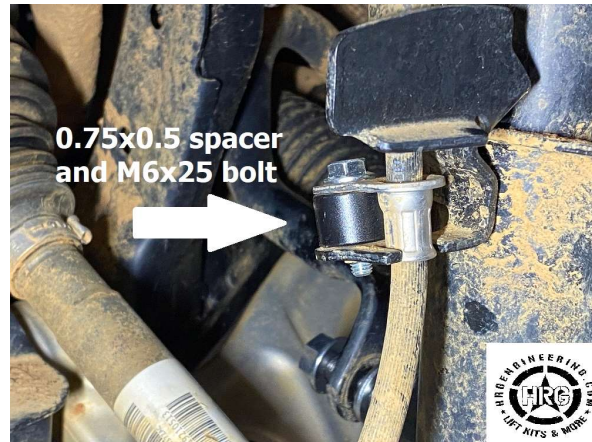
Step 18. Reinstall strut with spacer attached, using original hardware through the shock tower and into the spacer.



Step 19. Replace plastic shock tower cover.

Step 20. Place 0.5x0.75 spacer between brake line and brake line mounting bracket on the strut. Secure with supplied

M6x25 bolt.



Step 21. Trim 3/16" from outer edge of bottom of strut to gain additional clearance from axle shaft as shown in photos below. Touch up with anti-rust paint.



Step 22. Install lower bolt connecting strut to knuckle.

Step 23. Install offset camber adjustment bolt in place of upper strut bolt. (See separate instructions included with bolts.)



Step 24. Install supplied shorter sway bar end link.

Step 25. Repeat steps 3-24 for passenger side.

Step 26. Tighten all bolts

Step 27. Reinstall wheels.

Step 28. Get a professional 4 wheel alignment.



Note: Installing a lift kit will change the suspension geometry and will require a 4 wheel alignment.

Warning: Failure to follow the procedures in these installation instructions may result in unsafe handling characteristics, damage to vehicle, or loss of

control.

For tech support, please call 1-844- HRG LIFT (474-5438) from 8-5 EST Mon-Sat or email us 24/7 at support@hrgoffroad.com.

This product is intended for off-road use only!!

Copyright HRG Off-road. 2023

Checklist:

___ BS2122F-1.5 (2)	9-a
___ BS2122 SBEL (2)	9-d
___ BS2122 ABS bracket (1 L and 1 R)	2-o
___ BS2122 BLS (1 pack of 2)	1-o
___ CAMBOLT - 14	1-c
___ sticker	